

# FastTach

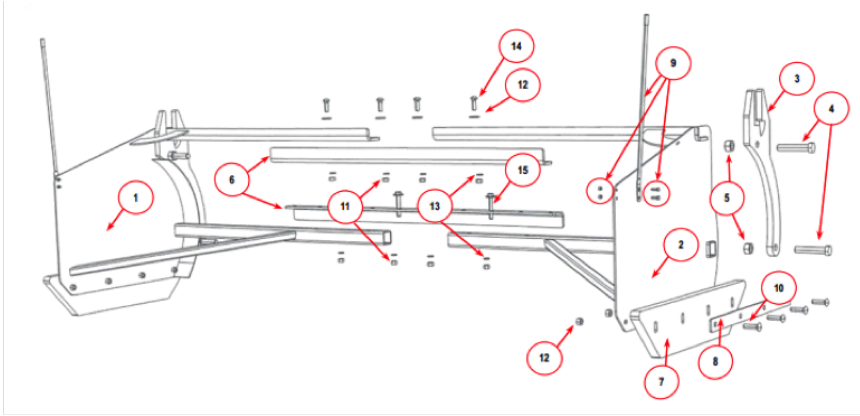
## Parts Identification



# Parts Identification

## SnowWolf FastTach Snow Pusher

KIT # 50025



Item#	Part#	Description	Qty Used.
1	P60020	FastTach Right Side Weldment	1
2	P60021	FastTach Left Side Weldment	1
3	P60022	FastTach Attaching Bracket, Left or Right	2
4	P60023	Hex Bolt, 1" x 5"	4
5	P60024	Lock Nut, 1", Grade C	4
6	P60025	Span Bar, Upper or Lower	2
7	P60026	FastTach Urethane Cutting Edge, L or R	2
7	P60026-K	FastTach Urethane Cutting Edge Kit, L and R,	1
8	P60027	Cutting Edge Hold-Down Strip, Left or Right	2
9	P50001	Blade Marker Guide Set	1
10	P60008	Carriage Bolt, 5/8-11 x 2-1/2 (for Poly Cutting Edge)	8
11	P60009	Hex Nut, 5/8-11	16
12	P60028	Flat Washer, 5/8"	8
13	P60029	Lock Washer, 5/8"	8
14	P60010	Carriage Bolt, 5/8-11 x 2	4
15	P60031	Hex Bolt, 5/8-11 x 4"	4
Not Shown	P60038	FastTach Decal	2
Not Shown	P60039	Rubber Bumper	4
Not Shown	P60039-K	Rubber Bumper Kit with Hardware	1
Not Shown	P60040	Polymer Cutting Edge for Snow Catch	2
Not Shown	P60040-K	Polymer Cutting Edge for Snow Catch Kit	1